



## A CAPITAL CAMPAIGN TO BUILD A PLACE TO LIVE, GATHER AND GROW

"What makes us human is not our mind  
but our heart,  
not our ability to think,  
but our ability to love."

Henri Nouwen

**L'ARCHE**  
GREATER VANCOUVER

  
**WE ALL**  
**BELONG**  
CAMPAIGN

**L'Arche Greater Vancouver** is an intentional community—a group of people who have chosen to be together in pursuit of a common ideal—where adults with developmental disabilities, along with those who assist them, share life together in family-like settings and work environments.

L'Arche is an example of a compassionate community that cares for some of society's most vulnerable citizens and celebrates each person and their gifts.

---

## L'Arche Greater Vancouver

### IDENTITY AND MISSION STATEMENTS

#### Identity Statement

We are people with and without developmental disabilities, sharing life in communities belonging to an International Federation.

Mutual relationships and trust in God are at the heart of our journey together.

We celebrate the unique value of every person and recognize our need for one another.

#### Mission Statement

To make known the gifts of people with developmental disabilities, revealed through mutually transforming relationships.

Foster an environment in community that responds to the changing needs of our members, whilst being faithful to the core values of our founding story.

Engage in our diverse cultures, working together toward a more human society.

#### INTERNATIONAL FEDERATION OF L'ARCHE COMMUNITIES



L'Arche is a French word meaning “the ark” and refers to that universal symbol of safety and inclusion.

This campaign prospectus is a request for you to consider your support of L'Arche Greater Vancouver's vision. We intend to broaden our mission and welcome more people while addressing the urgent need to provide accessible, affordable housing.





## MESSAGE FROM THE EXECUTIVE DIRECTOR AND THE CAMPAIGN CHAIR

Our belief is that we all belong and it has long been our dream to create a new community resource in support of it. The time has come for the biggest dream in our history!

Our vision comes from our commitment to respond to the changing needs of our aging members and the growing need and desire for younger people to be part of an intentional, supportive community.

At L'Arche we recognize the unique value of each person and believe that everyone has gifts to offer society where difference is not only welcomed, but celebrated. Together we discover our shared humanity and our need to belong.

L'Arche Greater Vancouver has been part of Burnaby's South Slope neighbourhood for over 46 years. Our current building has enabled us to live a rich model of shared life together and welcome the larger community into a place of belonging.

However, we are now faced with the reality of aging infrastructure and inaccessibility. As society and people's needs continue to change, L'Arche must diversify the way in which we support people.

**There is an urgent need for individuals with developmental disabilities to have a broader choice of affordable housing and support models.**

This project will enhance and expand the features that have served us so well. L'Arche will continue to provide homes and community inclusion programs where people with and without developmental disabilities share life together in community.

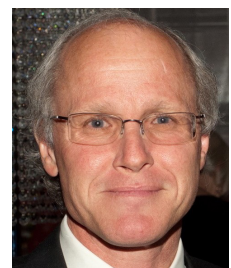
One of the most exciting features of this project is that it will provide options for individuals to live more independently in a supportive community. In addition, it will offer much needed non-market housing.

In a large city where many people feel isolated and alone, L'Arche will continue to be a valuable resource by being a place of belonging.

Thank you for helping us realize our dream.



*Denise Haskett*  
Denise Haskett  
Executive Director



*Ted Kuntz*  
Ted Kuntz  
Campaign Chair

“The greatest disabling condition comes from loneliness and isolation.”

—Vancouver Foundation [from 2011 poll of community leaders]



## L'ARCHE: THE BEGINNING

In 1964, the first L'Arche home opened in France in a small cottage where people with and without disabilities began to share life together in community. From its beginnings, L'Arche provided a home in the truest sense of the word. It began as a response to greater society's call to bring people with developmental disabilities out of the degrading conditions of institutions.

No longer were people with disabilities seen as something shameful to be isolated and hidden, but as full human beings inherently deserving of love and respect and capable of offering unique gifts to society.

From these humble roots, L'Arche grew quickly. **Today there are more than 154 L'Arche communities and 19 projects in 38 countries around the world.**

L'Arche Greater Vancouver was founded in 1974 and is one of 31 communities across Canada. We operate six homes and two community inclusion programs.

The need for creative models to support individuals is great because, according to Inclusion BC, adults with developmental disabilities:

- are over-represented in homeless shelters
- are living with their aging parents and don't have the resources or support to live outside the family home
- have aging family caregivers who are worried about the future of their loved ones
- are placed in nursing homes or other congregate facilities because they cannot access support in the community
- are four times more likely to be victims of violence and abuse than other British Columbians

2

A governing philosophy of L'Arche communities is the belief that people with disabilities are teachers rather than burdens bestowed upon families.

This model of support creates a rich and lasting experience with many of these relationships between individuals and those who support them continuing throughout a person's life.

---

What makes L'Arche unique is that people with developmental disabilities and those who assist them share life together in an intentional community.







Canada Mortgage and Housing Corporation (CMHC) determined in 2010 that 25.7% of people with developmental disabilities in BC live in housing that fails standards of safety, stability and affordability. CMHC also identified the L'Arche home model as a best practice.

## WHERE DO PEOPLE FIND BELONGING?

As a society we have come a long way from the segregated and institutional living of past generations, but today, people with developmental disabilities are often marginalized.

While it's common for children with disabilities to be included in our daycares and schools, once they reach adulthood, the opportunity for inclusion in work and social communities is greatly diminished. It is not uncommon for adults with disabilities to become isolated.

As these individuals mature into adulthood, the challenge for many parents is having the physical and emotional strength to continue to support them. Eventually, parents may reach a point where they are no longer able to care for their adult children with disabilities.

As well, some young adults with developmental disabilities reach an age where, for their own growth and development, they desire more independence. These young adults want to move out of their family home, but where can they go?

When it comes to issues of health, factors such as living conditions are being recognized as crucial. If people with developmental disabilities are isolated or alone, they are especially vulnerable.

At the heart of L'Arche is the understanding that every person is valued and has unique gifts to contribute to society. Through participation in an intentional community, people with developmental disabilities share their gifts and enjoy their full potential living in stable, secure, affordable homes.



*"I support the exciting vision for L'Arche's redevelopment. As I witness the social isolation and loneliness that so many experience in our city, I believe there is a pressing need for compassionate caring communities such as L'Arche that can serve as an anchor in our neighbourhoods."*

**Kathi Bentall** is a founder of the Rivendell Retreat Centre and is also on the Co:Here Foundation Board that helped create the vision for a unique model of social housing in Vancouver. Co:Here was influenced by the example of L'Arche.





## L'ARCHE: A PLACE TO BELONG

### Our Homes

Home life is the cornerstone of L'Arche. It is in the home where mutual relationships come to life. With each person contributing as they are able, meals, birthdays, and times of prayer are daily activities that strengthen the bonds between people. L'Arche homes are also places where family and friends are welcomed.

**Unique to the L'Arche model is that assistants come to live, work and participate in the community,** building meaningful, mutual friendships with members with developmental disabilities.

During their stay of one or more years, these assistants, who are often young people, discover their gifts and the gifts of others.

While at L'Arche many assistants recognize and embrace their responsibility to create a better world. Often they report that the values they learned while living at L'Arche had a significant and lasting impact on their career and family life. L'Arche Greater Vancouver has established an assistant alumnus of over 500 people.

WE ALL  
BELONG

### Christina's Story—A Parent's Perspective

Consider the typical day of two different young adults who have **Down Syndrome**. They both grew up in loving families that advocated for inclusion in school and in the community, and attended special education college programs. They both have many gifts and abilities.

**The first** awakens to an alarm, gets ready for work, grabs her phone and backpack, and hurries to catch the bus to her part time job. After work, she heads home, mindful of her commitment to go to exercise class or to have coffee with a friend.

**The second** starts her day when mom wakes her up. She'd rather stay in bed, but turns on the TV and plunks down in front of it. Mom asks what the plan is for that day; she says that she just wants to stay home by herself.

**What makes these two "days" so very different? Christina (the first) lives at L'Arche.**

Christina has been a member of L'Arche Greater Vancouver for nine years. She lives a full life where her gifts are valued, her talents are nurtured and her shortcomings are accepted, and where she has a social life that is independent of her family.

*"Without L'Arche, Christina's experience would be quite different.  
I will be forever grateful that L'Arche and all it stands for came into our lives."*

—Diane Bruce





## Our Programs

Meaningful work and daytime activities are essential to a person's dignity and self-worth and the focus of our two Community Inclusion Programs.

**Neighbours Helping Neighbours** involves a team of adults with developmental disabilities who provide yard work, maintenance, light carpentry work and outside cleanup for seniors, people with physical disabilities and other local community organizations.

**This program is running at capacity and there is a demand from our customers to expand this service.** Our new building will allow us to meet those demands and offer meaningful work and daytime activities for more individuals with developmental disabilities.

L'Arche's commitment to excellence has consistently earned a 3-year accreditation status from CARF [Commission on Accreditation of Rehabilitation Facilities], the highest award available from this independent, non-profit accreditor of health and human services. A CARF accreditation is considered recognition that an organization continues to improve their service quality as defined by objective international standards.

*"Through L'Arche programs and services there is a powerful sense of mutuality and belonging. L'Arche Greater Vancouver is commended for the unique Neighbours Helping Neighbours initiative within its community integration program. Their services are essential for the safety and quality of life for many elderly people in the community."*

—2015 CARF Survey

The **Emmaus Centre** is a social, recreational and outreach program where people learn important life skills such as welcoming guests, preparing meals and volunteering in the larger community.

## A Parent Speaks about the Emmaus Centre

*Since joining the Emmaus Centre, my son has received outstanding support. When he stays for an evening activity he is invited for dinner in one of the L'Arche homes. After the activity, someone takes him to the Skytrain or even drives him home.*

*During the summer he was included in special L'Arche activities and outings. He now has a new group of friends at L'Arche, which means a great deal to someone who is as social as he is. As a mother, it means so much to know that he is safe and enjoying new opportunities.*







## Our Challenge

People who live at L'Arche are aging and many have mobility issues, requiring a building that is fully accessible. The L'Arche building on Sussex Avenue was originally designed as a home for unwed mothers by the United Church of Canada.

It is now nearly 50 years old, has become costly to operate, is in need of extensive infrastructure upgrades, and is not accessible.

At the same time there is **an urgent need to support younger individuals with developmental disabilities with a variety of housing options and support models**. Meeting these needs requires significant changes and **our existing building does not allow us to expand our residential capacity or our community inclusion programs**.

One consideration was moving to a new location. The Sussex property, however, is ideally located to transit and community amenities and backs on to David Gray Park. With our other three L'Arche homes located nearby, developing our Sussex property made the most practical and financial sense.

Renovating was considered; however, after extensive consultations with key stakeholders, **it became clear that the best option was to re-develop our Sussex Avenue property**.

Additionally, we have long-standing relationships in this community that we have developed and nurtured for over four decades. Maintaining these relationships is important to our success as an organization.



# Our Plan

## TO REALIZE THE BIGGEST DREAM IN OUR HISTORY

Our Strategic Plan asked us to expand our vision to support more people with developmental disabilities and share their gifts in society. We have taken this challenge seriously and our Housing Planning Committee has moved us forward to dream **the biggest dream in our history**.

We have committed ourselves to creating opportunities to welcome more people to our L'Arche homes and programs, and create new ways of living in community.

Taking full advantage of our existing property, our plan is to build a three-storey, concrete structure. Through innovative design, it will address the urgent need for full accessibility, allow community members to age in place and provide us with the ability to expand both our residential living and community inclusion programs.

Our plan also includes the addition of non-market rental accommodation that will create options for those who would like to live in close proximity to L'Arche in order to participate and contribute to our life together.



The major elements of our plan include:

- Replace three existing, aging homes with **three fully accessible homes** for people with developmental disabilities and those who assist them
- Provide **expanded space for community inclusion programs** in order to welcome additional people into these programs
- Provide **10 additional units of housing** as new models of support for adults with developmental disabilities who can live more independently
- Provide **29 units of non-market rental housing** for those who wish to be a part of our intentional community
- Provide **fully accessible meeting spaces** that can adapt to various groups.

The plans also include space for a small coffee lounge that will provide training and meaningful work for adults with developmental disabilities in the future.

It will be a place where people from our neighbourhood will be welcomed to enjoy fresh baking and beverages, made and served by people with developmental disabilities.

## The Transition

To move forward with our plans, a critical step will be the temporary relocation of those living and working in our building. We have optimized the capacity of our other three homes and are in dialogue with our stakeholders to secure appropriate places in Burnaby for the anticipated two-year relocation period.

This plan is currently underway and will be implemented in stages as we secure suitable living, community inclusion and office spaces. The move will take place at the end of 2020.



## Our Partners

### TL HOUSING SOLUTIONS

L'Arche is pleased to be in partnership on this project with **TL Housing Solutions**, a "single source solution for those seeking help in developing non-profit housing". Their expertise in developing creative housing solutions makes them the ideal partner for our project.

TL Housing assists not-for-profit organizations by providing financial assistance in the feasibility and start-up phase of a project. They also assist with sourcing construction financing in the public and private markets and accessing density bonuses, civic contributions, BC Housing funding programs and subsidies, as well as favourable loan rates.

*"It is our mandate as a company, and our responsibility as citizens of this country, to help break down the barriers of housing accessibility for those in need."*

—Lauren Ilich

President, TL Housing Solutions

### CITYSPACES CONSULTING LTD.

L'Arche is also pleased to be working with **CitySpaces Consulting Ltd.**, a local company with over 30 years of experience assisting non-profits navigate through all stages of a development project from concept and design to final approvals, construction, and completion.

With extensive experience in the non-profit sector, CitySpaces understands the complexity and challenges facing organizations delivering social services to vulnerable populations. They bring to our project a unique combination of professional expertise that includes community planning and project management.

*"CitySpaces Consulting is delighted to be supporting L'Arche on this exciting and highly rewarding project. We greatly look forward to working with the team over the project duration."*

—Gwynn Symmons

Co-Founder and Principal



Burnaby Mayor  
Mike Hurley

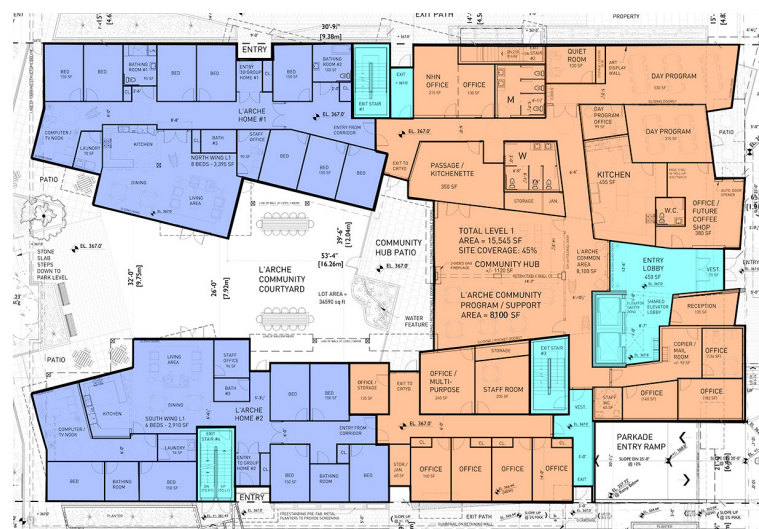
*"L'Arche Greater Vancouver has made a significant contribution to our community for more than 46 years. One of the core principles of L'Arche is the belief that every person has gifts to offer society. Their mission is to realize the gifts of people with developmental disabilities and to make them known. L'Arche is a wonderful example of a diverse community of people sharing life together and reaching out to the broader community to be a place of welcome. Through their Neighbours Helping Neighbours community inclusion program, L'Arche also brings much-needed support to many of our seniors and community organizations. Council is very grateful to L'Arche for their generosity of spirit, which makes Burnaby a more caring, inclusive place to live. The City of Burnaby wishes your future redevelopment a great success which will allow more people to benefit from the rich experience in our diverse community."*



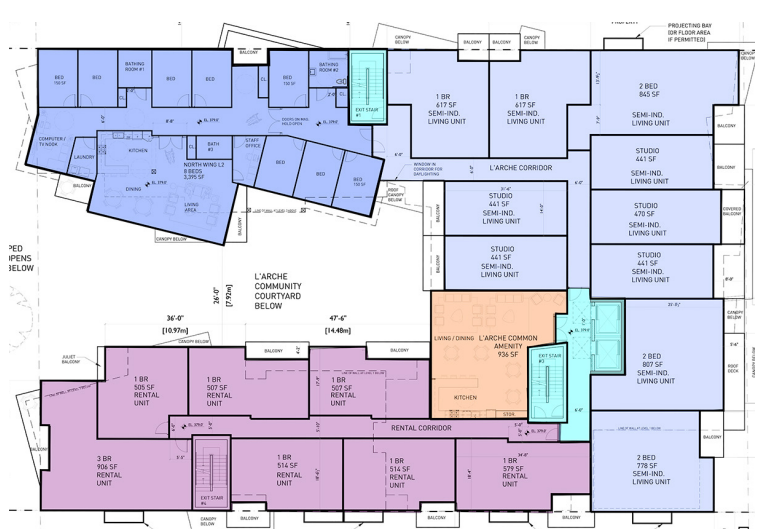


WE ALL  
**BELONG**  
CAMPAIGN

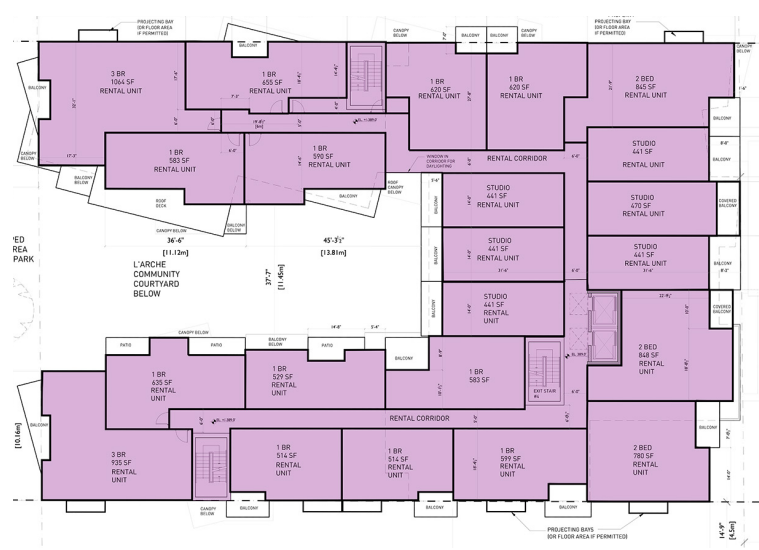
# Realizing the Dream



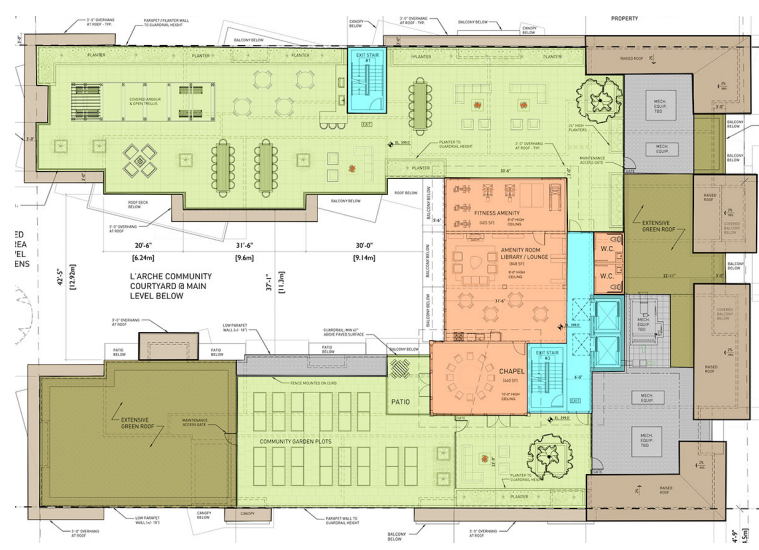
**LEVEL 1—L'Arche Homes & Community Spaces**



**LEVEL 2—L'Arche Homes & Supported Living Rentals**



**LEVEL 3—Rental Units**



**ROOFTOP—Garden, Chapel & Community Amenities**



## Melina's Story

Melina is truly young at heart, in spite of the fact that she came to L'Arche over 40 years ago. She is also considered to be one of the "memory keepers" of L'Arche because she still vividly recalls the people who welcomed her and the wonderful times they had together.

In her early days, Melina worked at L'Arche Wood Products where she helped make shelving that was sold to local businesses. As someone who has always cared about the details, she dedicated herself to making sure the screws were tight and checking for any faults in construction.

Today, Melina uses her amazing memory and her artistic ability to create birthday cards for her friends and for many others connected with L'Arche when they are celebrating a special day.

Last year alone, she sent off over 80 cards to former assistants. She also keeps her friends aware of upcoming special days with the monthly birthday calendar she makes in the Emmaus Centre where she spends most of her afternoons.

Melina is a quiet, friendly observer of life around her. Twice a month Melina and other friends from L'Arche gather in a local café for an afternoon of knitting. Her mother taught her how to knit and now Melina is teaching others.

For someone who is supposedly slowing down, Melina's life is very full. She's committed to her church, her friends, her health and her favourite hobby—jigsaw puzzles.

It's through the support of our donors that Melina has a place to call home, celebrate with others, and share her gifts.



"The L'Arche Vancouver project is at the heart of L'Arche's mission: to make known the gifts of people with developmental disabilities, revealed through mutually transforming relationships. In various cultural contexts around the world, L'Arche is committed to work together to build a more human society. This project is much more than a building that will welcome more people with disabilities. It will enhance the neighbourhood and city around it, by being a place of belonging for people of diverse cultures, beliefs and abilities. This project will make a significant contribution to society, by creating a safe, supportive place to 'live, gather and grow'. By supporting this project, you are helping to change the world! Thank you for being with us."

—Louis Pilotte  
National Leader, L'Arche Canada





## A Neighbour's Experience of L'Arche

Neighbours Helping Neighbours is a L'Arche crew of physically fit adults with developmental disabilities that reaches out to the elderly and others in our greater neighbourhood who may be having difficulty with basic gardening and other light chores.

They do this as neighbours, expecting nothing in return—just the joy of serving others who need a hand. One such neighbour was Ann, who lived across the fence from Nazirah House for years. Without family close by, she became part of the L'Arche family. Our crew took care of her yard and, when she wasn't able to get groceries on her own, they would take her shopping.

Shortly after Christmas 2016, crew members noticed changes in Ann's appearance and behaviour. Her grocery shopping didn't include the food items she usually purchased; she sometimes seemed confused and was losing weight.

Ann's L'Arche family became concerned and reached out to a nurse who had been part of the L'Arche community for years. When she went to visit Ann, she found that she had been eating poorly, and soon afterwards Ann was admitted to hospital where a cancer diagnosis was confirmed.

Ann was transferred to St. Michael's hospice, right next to L'Arche's main building, which meant Ann's L'Arche family could visit often—which they did, almost every day. The Neighbours Helping Neighbours crew continued to tend her yard even though she wouldn't be coming home again, and often brought her flowers from her own garden.

Seven months later, Ann passed away with her L'Arche family by her side. They all miss her and the anchor she was for their neighbourhood. Ann often remarked that she didn't know how she would have coped without L'Arche.

WE ALL  
BELONG





## MEETING THE NEED

Many people with developmental disabilities struggle to find affordable and adequate housing due to the high cost of living, as they typically have higher levels of unemployment and lower incomes.

In 2016, Community Living BC (CLBC), the provincial crown corporation that funds support services for adults with developmental disabilities over the age of 19, served 18,900 adults and their families, an increase of 20% or 3,100 individuals since 2014.

This 20% increase is consistent with the situation in the City of Burnaby, where the additional number of adults eligible for support reached 690 in 2016.

The largest proportion of people with developmental disabilities are between the ages of 45 and 64 years, and as they face issues associated with aging, many will soon need new and/or accessible housing. Those individuals still living with their parents will also need new housing arrangements because, as their parents age, they reach a point where they are no longer able to care for them.

A report from Canada Mortgage and Housing Corporation (CMHC) has highlighted the significant unmet need for suitable housing for adults with developmental disabilities. Too often, these individuals are housed where space is available, rather than in residences suited to their specific needs.

Further to the care and housing needs of those with developmental disabilities, CMHC statistics show Central Park/Metrotown, the area where the Sussex Avenue Project is located, is in an affordability crisis. Burnaby's extremely low vacancy rate [2016] of 0.8 percent has seen the average rent for a 2-bedroom apartment reach \$1,372.

Contrast this cost with the \$716 income assistance that adults with developmental disabilities receive, of which \$375 is earmarked for shelter costs, and you have a population at risk of securing any type of housing.

The key component of the L'Arche project, which will provide an increased number of high quality residential spaces for these adults, including those who can live with a greater degree of independence, is the revenue that will be generated by the 29 new units of non-market rental housing.

As the CMHC information and other recent third party studies across the Lower Mainland confirm, there is a critical need for the residential component of this project, and **the location of the project and number of persons in the area in need of affordable and appropriate housing will ensure there is sufficient demand to achieve the required level of revenue from the residential component.**

12



*"The excellent community environment and personal relationships that L'Arche fosters are true reflections of the love and ministry of Jesus, and I am grateful for the presence of this unique ministry in our city.*

*This campaign is timely and necessary, and it is a privilege for our local Church to be able to give tangible support towards securing a bright future for L'Arche Greater Vancouver."*

—J. Michael Miller, CSB—Chair, Honourary Campaign Committee  
Archbishop, Roman Catholic Archdiocese of Vancouver





## PROJECT TIMELINE

### Pre-Demolition

Summer 2020

Building permit submission

3rd reading by City Council

Fall 2020

Relocation of residents and staff

### Demolition and Tendering

Winter 2020

Hazmat abatement and demolition

Spring 2021

4th and final reading by City Council

Tendering, final costing and building permit issuance

### Construction

2021-2022

Construction phase (18 months)

Winter 2022

Move in/Building Occupancy

## The Financial Plan

The project's financial projections and financial plan are based on a sound set of assumptions that forecast strong community support and sufficient rental revenues to make the project viable.

The total cost to replace the existing building with a new 52,000 square foot building is approximately \$22 million.

The Board of L'Arche Greater Vancouver is encouraged by the enthusiastic response to this project from all levels of government as well as the community. We are confident in the project's financial success and community impact.

L'Arche has retained the services of CitySpaces, an experienced and respected development consultant organization that has a strong history of working with not-for-profits like L'Arche. CitySpaces will provide project oversight and independent guidance as we engage in the various facets of project development and funding.

The **We All Belong** Capital Campaign is crucial to the financial viability of the project because it is the means by which the rental housing rates will be kept truly affordable.

*For more detailed information, a breakdown of the financial plan components is available in a separate document.*

## AN INVITATION TO CONTRIBUTE

We are inviting individuals, families and organizations to join us in what is the most significant event in the history of L'Arche Greater Vancouver. This new building offers a plan for growth and inclusion. It will be a place where people, whatever their gifts, will be welcomed and supported to grow to their full potential.

## The Gift That Matters

We invite you to support our vision of creating a new community resource in the lower mainland that is grounded in the value that **We All Belong**. This resource will not only support individuals with disabilities; it also creates an opportunity for the wider community to experience an intentional community and the benefits of living in relationship with individuals with disabilities.

**The L'Arche redevelopment project has a projected cost of \$22 million.** Local and provincial governments have been extremely supportive of this project with provisional commitments of about \$7.1 million. Reaching our capital campaign goal of \$6 million, together with long-term financing of about \$9 million, allows us to make our project viable.

The key to a successful campaign is generous giving. Generosity means something different to each person; for some, a commitment of moderate size will represent a sacrifice, while in other cases a larger gift is possible.

With everyone giving according to the best of their ability we can fulfill the vision of our expanded L'Arche community in Greater Vancouver.

Gifts of cash or pledges spread over 3 years will enable L'Arche to plan the construction of the new building. As you consider your pledge to the campaign, please remember that 100% of campaign contributions are tax deductible.

**IT'S A FACT:** In BC, your tax credits for charitable donations above \$200 reduce the cost of your gift by almost one-half. Federal and provincial government tax incentives encourage individuals to support their favourite charities. Many donors underestimate the true value of these incentives, in part because federal and provincial tax credits are calculated separately, not as one total amount on an individual tax return.



## WAYS TO GIVE

- **GIFTS AND PLEDGES**—Cash gifts and pledges made over a period of up to three years. Cash gifts can be made either as a one-time gift or as a monthly or annual gift spread over 3 years. Your gift will be recognized, unless you wish to remain anonymous.
- **PLANNED GIFTS**— Gifts made from accumulated resources or assets, not income. Under current tax laws, there are opportunities for you to make a significant gift to L'Arche from your accumulated savings or assets, rather than income. And due to the tax advantages, this gift will not negatively impact your current financial circumstances.

### Two major categories of Planned Gifts: Immediate Gifts and Future Gifts

#### Immediate Gifts

##### MARKETABLE SECURITIES

In Canada, making a gift of listed securities or mutual funds to a registered charity can eliminate the capital gains tax you would have to pay if you first sell the securities and then donate the proceeds from the sale to the charity.

These gifts may take the form of stocks, bonds, or mutual funds. If you wish to support our We All Belong Campaign with a gift of listed securities that have appreciated in value, it is important that you transfer these securities directly to L'Arche.

##### CHARITABLE GIFT ANNUITIES

If you have savings outside of a RRIF [Registered Retirement Income Fund] and are using them to generate retirement income from Bonds or GICs, you can generate a higher retirement income through a Gift Annuity and make an immediate gift to L'Arche.

A charitable gift annuity involves a contract between a donor and a charity, where the donor transfers cash or property to the charity in exchange for a partial tax deduction and a lifetime stream of annual income from the charity. The amount of the income stream is determined by many factors including the donor's age, gender and marital status; the older you are, the higher the annuity income will be.

##### GIFTS IN KIND

There are many forms of "in kind" gifts that can be made, if they are 'material goods' that would be required to complete the project. These could include materials from concrete to lumber and landscaping. **If this is a consideration, please discuss this further with L'Arche's campaign team.**

#### Future Gifts

##### DONATE THROUGH A WILL

Bequests are a very important and meaningful way to make an ultimate gift to L'Arche. You can leave either a specific gift of cash or other assets, or a portion of your estate.

##### CHARITABLE REMAINDER TRUST

By placing cash, property or securities in a trust for L'Arche Greater Vancouver, you will receive a guaranteed income for life, immediate tax savings, and L'Arche Greater Vancouver receives the trust capital on your passing.

##### GIFT OF RRSP/RRIF ASSETS

Consult a financial advisor if you are considering making a gift through an RRSP/RRIF. If you have a larger amount of your assets in RRSPs/RRIFs but only small amounts of assets outside of these registered plans, you might consider withdrawing funds from your RRSP or RRIF to support the campaign.

#### Professional Support from a Financial Advisor

**Gifts in any category require careful planning to take advantage of Canada's tax laws that are designed to encourage generous giving.** If you do not have a financial advisor, we recommend you consult a local professional advisor who is knowledgeable in all aspects of charitable gifts and planned giving.



**YES! I/We want to support the campaign  
to build the NEW L'Arche Community Building.**



I/We wish to contribute a total amount of \$ \_\_\_\_\_, as follows:

**An immediate gift of \$ \_\_\_\_\_**

**AND**

**A. Monthly installments of**

\$ \_\_\_\_\_ per month for \_\_\_\_\_ months,  
commencing \_\_\_\_\_, 20\_\_\_\_

**or**

**B. Annual payments totaling \$ \_\_\_\_\_, as follows:**

\$ \_\_\_\_\_ by \_\_\_\_\_  
\$ \_\_\_\_\_ by \_\_\_\_\_  
\$ \_\_\_\_\_ by \_\_\_\_\_  
\$ \_\_\_\_\_ by \_\_\_\_\_

**or**

**C. Single payment of \$ \_\_\_\_\_**

to be paid on or by (date) \_\_\_\_\_

**or**

I am interested in knowing more about these types of gifts:

- |   |  |
|---|--|
| <input type="checkbox"/> Marketable Securities    | <input type="checkbox"/> Charitable Gift Annuities   |
| <input type="checkbox"/> Donations through a will | <input type="checkbox"/> Charitable remainder trusts |
| <input type="checkbox"/> RRSP/RRIF Assets         |  |

**PLEDGES:**

I / We wish to pay by:

☐ **Cheque or post-dated  
cheques payable to:**  
L'Arche Capital Campaign

☐ **Credit Card**

☐ VISA ☐ MASTERCARD  
Name on Card:

Card No.:

\_\_\_\_\_/\_\_\_\_\_/\_\_\_\_\_/\_\_\_\_\_

Expiry Date \_\_\_\_\_ / \_\_\_\_\_

CVW/CVC \_\_\_\_\_

☐ **Pre-Authorized payment  
(Electronic Funds Transfer)**  
Please include a void cheque.

**INFORMATION FOR TAX RECEIPT:**

Name: \_\_\_\_\_

Address: \_\_\_\_\_

City: \_\_\_\_\_ Postal Code: \_\_\_\_\_

Phone: \_\_\_\_\_ Email: \_\_\_\_\_

**I/We wish to make our gift:**

in Honour of: \_\_\_\_\_

OR in Memory of: \_\_\_\_\_

Kindly notify (PLEASE PRINT):

Name \_\_\_\_\_

Address \_\_\_\_\_

City \_\_\_\_\_

Province \_\_\_\_\_ Postal Code \_\_\_\_\_

**DONOR RECOGNITION:**

Unless otherwise instructed by the donor, all gifts will be  
recognized. A donor recognition document is available on request.

**OR** ☐ I / We wish my/our gift to remain anonymous.

**Signature**

**Date**

**We All Belong Campaign**

c/o L'Arche Foundation of Greater Vancouver  
7401 Sussex Avenue, Burnaby BC V5J 3V6  
604.435.9544 • capitalcampaign@larchevancouver.org  
Charitable Reg. #137648671 RR0001



#### **OUR COMMITMENT TO OUR DONORS:**

1. It is understood the pledges may be revised or suspended due to changing circumstances.
2. Receipts for income tax purposes will be issued for all funds received up to and including December 31 of each year, in accordance with current CRA regulations.
3. L'Arche adheres to the Association of Fundraisers Donor Bill of Rights that can be viewed on this site:

[http://www.larchevancouver.org/support\\_overview.htm](http://www.larchevancouver.org/support_overview.htm)





L'Arche Greater Vancouver and the L'Arche Foundation of Greater Vancouver are registered charities with a volunteer Board of Directors. For the most current list of Directors, please visit our website: [www.larchevancouver.org](http://www.larchevancouver.org).

### **L'Arche Foundation of Greater Vancouver**

The L'Arche Foundation of Greater Vancouver is a separate registered charity dedicated to securing or raising funds from various sources for L'Arche Greater Vancouver (LGV). The Foundation is also responsible for LGV's capital expenses, new construction projects and building improvements.

### **L'Arche Greater Vancouver**

The L'Arche Greater Vancouver Board governs the operations of our six homes and two community inclusion programs. The Board is also responsible for contracting with government, which provides funding for the majority of L'Arche's operational needs.

## **WE ALL BELONG**

Honourary  
Campaign  
Committee

**The Most Reverend  
J. Michael Miller, CSB**  
Archbishop, Roman Catholic  
Archdiocese of Vancouver

**The Most Reverend  
Melissa M. Skelton**  
Archbishop, Diocese  
of New Westminster  
Anglican Church of Canada

**Richard Cheng**  
Senior Vice President,  
BMO Nesbitt Burns

**Kathi Bental**  
A Founder of the  
Rivendell Retreat Centre  
Board Member,  
Co:Here Foundation

**Sister Marie Zarowny**  
Province Co-leader,  
Sisters of St. Ann

**Hugh Ker**  
Architect

# WE ALL **BELONG**



## CAMPAIGN CONTACT INFORMATION

### **L'Arche Foundation of Greater Vancouver**

7401 Sussex Avenue Burnaby BC V5J 3V6

604.435.9544 ext 35

[www.larchevancouver.org](http://www.larchevancouver.org)

[capitalcampaign@larchevancouver.org](mailto:capitalcampaign@larchevancouver.org)